

MICHIGAN AVE STREETSCAPE

PROJECT OVERVIEW

MAY - AUGUST 2021

- Road and sidewalk reconstruction
- Water infrastructure upgrades
- Upgraded street furniture
- Street trees and improved lighting
- Improved landscaping
- Seating areas
- More efficient on-street parking
- Improved pedestrian safety

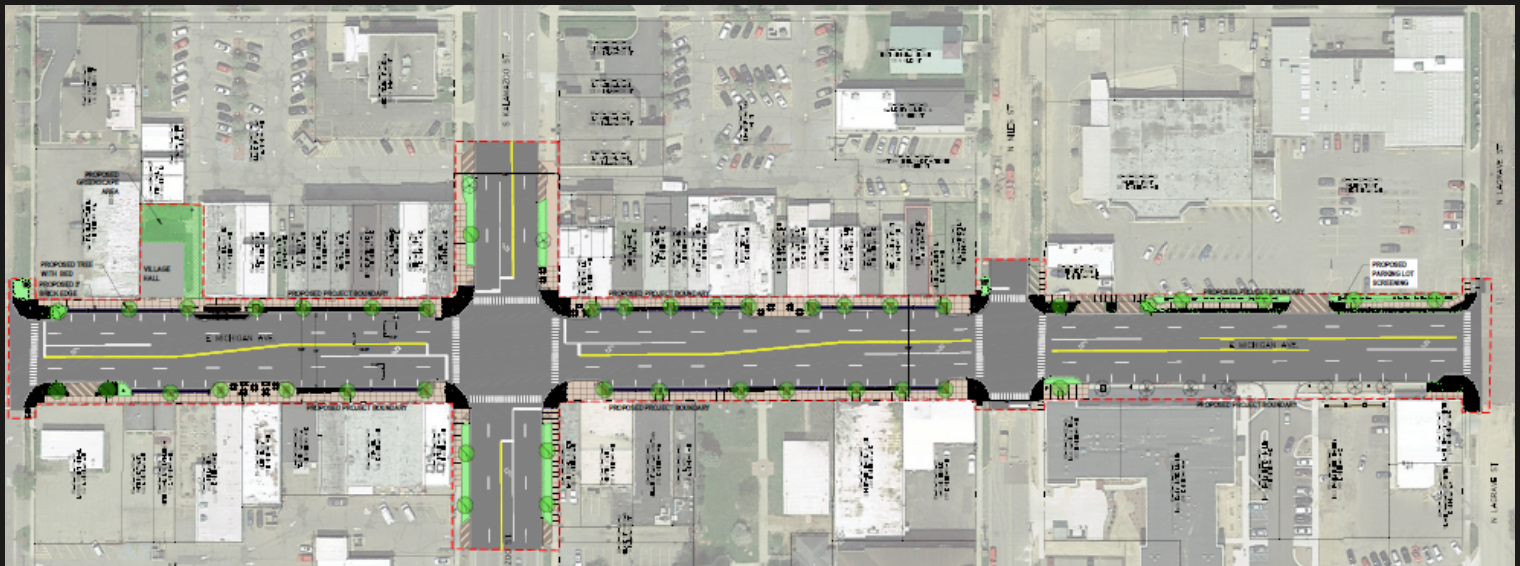


Artist's rendition for illustrative purposes only

MICHIGAN AVE STREETSCAPE

PROJECT PHASING

- Construction will take place Mid-May through August 2021.
- Construction activities to occur mainly Monday through Friday, with little Saturday work. No work is planned on Sunday or holidays.
- Parking lots behind Michigan Avenue businesses will be accessible in all phases.
- Roads will reopen to full traffic pattern no later than August 31, 2021.
- Landscaping and tree plantings will be finished no later than October 22, 2021.
- To maintain through traffic and avoid detouring around the downtown area, there will be no street parking along Michigan Avenue during construction.
- This phasing schedule is approximate and subject to change.



MICHIGAN AVE STREETSCAPE

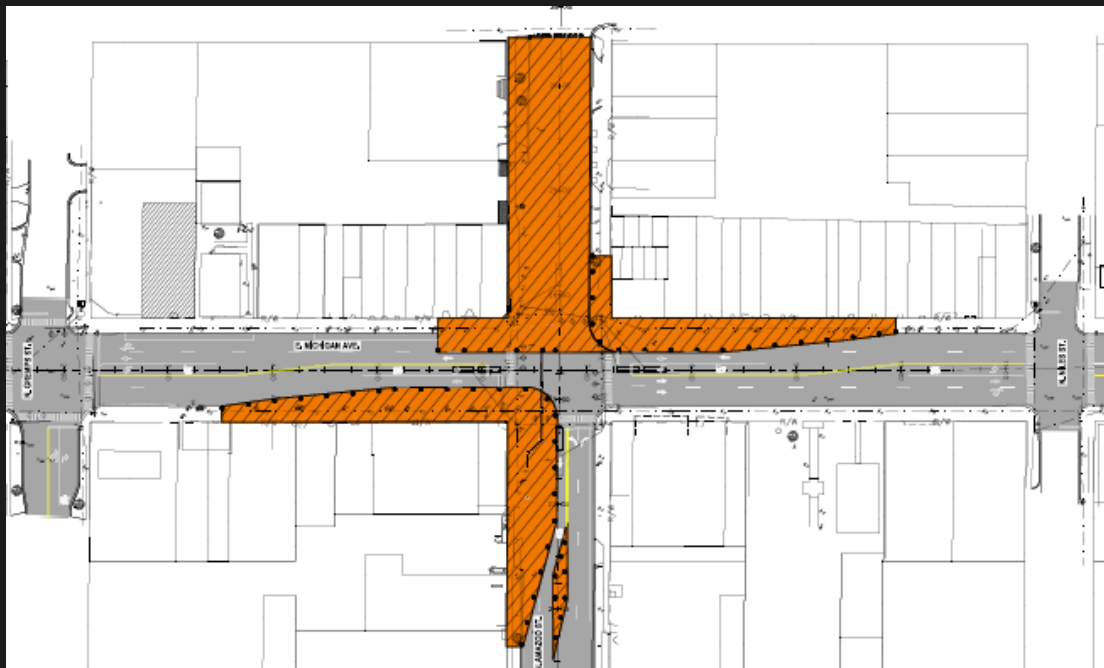
PHASE ONE

APPROX. 3 WEEKS

- Road closure of Michigan Avenue between N. Gremps and Kalamazoo. No vehicle access to fronts of businesses
- Pedestrian access will remain to all businesses
- East/west traffic will detour south on Gremps or Kalamazoo to cross on Fadel
- No sidewalks removals will happen along Michigan in Phase 1A.

Phase 1A work being done: Water main replacement along the west and north side of the intersection of Michigan Avenue and Kalamazoo Street. The road will be opened up in the Kalamazoo/Michigan intersection to remove old water main. Some small sidewalk disturbances may occur along Kalamazoo as water lines are reconnected.

Phase 1B work being done: Night work on M-40. M-40 will be closed between Oak and Paw Paw at night to complete water main work. Very little impact to businesses.



PHASE ONE DETOUR ROUTES

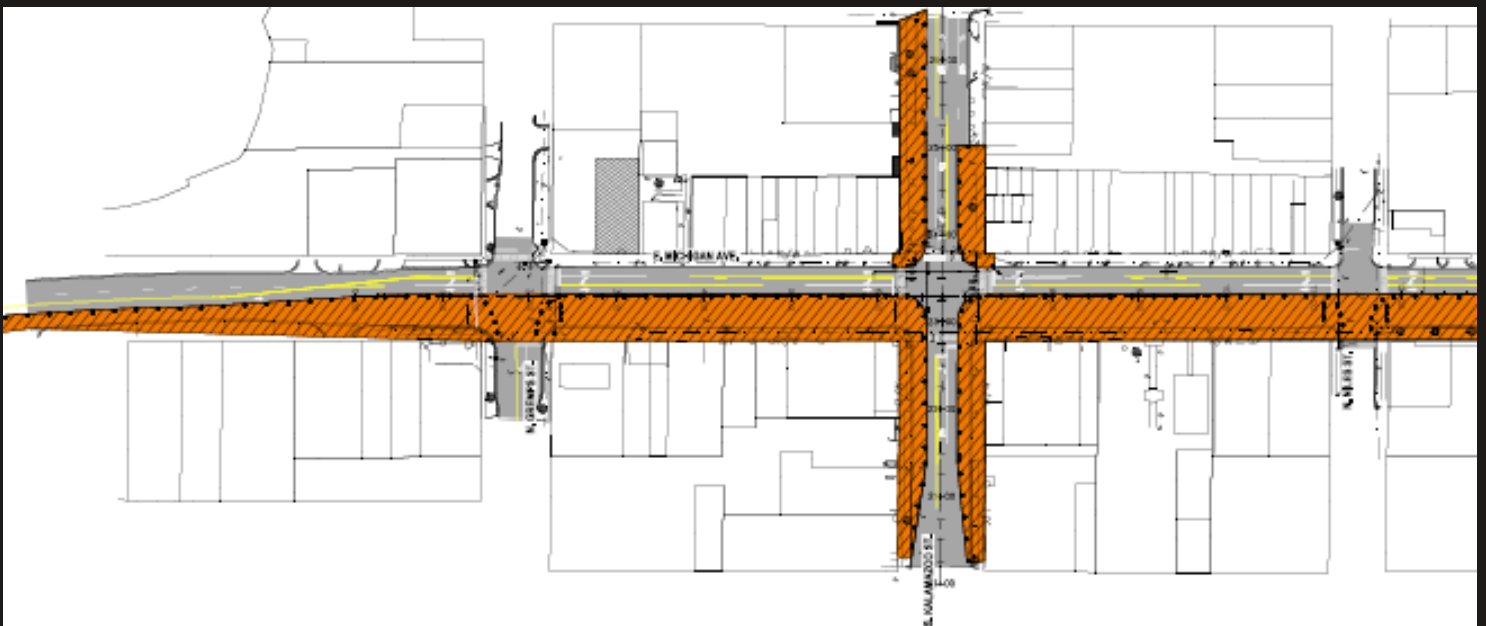


MICHIGAN AVE STREETSCAPE

PHASE TWO

APPROX. 4 WEEKS

- Sidewalk removals and road reconstruction will occur in front of all business on south side of Michigan between Gremps and LaGrave. (Businesses on north side of Michigan will not be under construction in Phase 2)
- Two way traffic will continue along north side of Michigan Avenue at 25mph reduced speed
- North/south traffic along Kalamazoo will be reduced to one lane each direction, plus turn lane, between Oak and Paw Paw
- Limited sidewalk work will be conducted on Kalamazoo Street, but connectivity will be maintained throughout this phase.
- No Michigan Avenue street parking will be allowed
- Maintenance gravel will be provided at business entrances to allow customer access at all times
- Replacement sidewalk and road surface will be in place at the end of Phase 2.

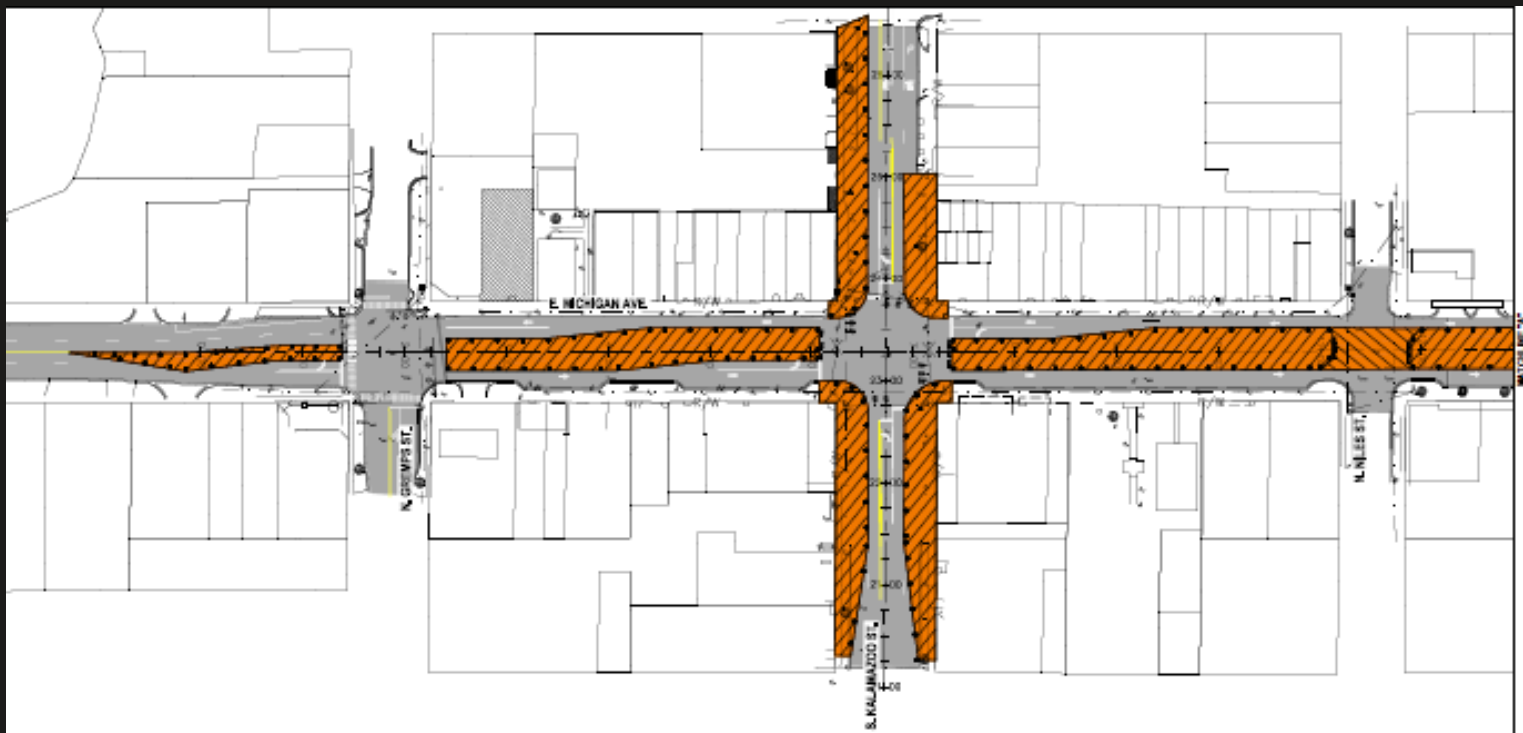


MICHIGAN AVE STREETSCAPE

PHASE THREE

APPROX. 2 WEEKS

- No street parking along Michigan Ave
- East/west traffic along Michigan will be limited to one 25mph lane in each direction
- North/south traffic along Kalamazoo will be one lane in each direction, plus turn lane
- Sidewalk access to businesses on north and south side of street will be open and usable
- Road construction work will be occurring in middle of Michigan Avenue from Gremps to LaGrave
- Phase 3 work being done – removal of pavement, grading of road to meet new road height, and reconstruction of middle section of Michigan Avenue.

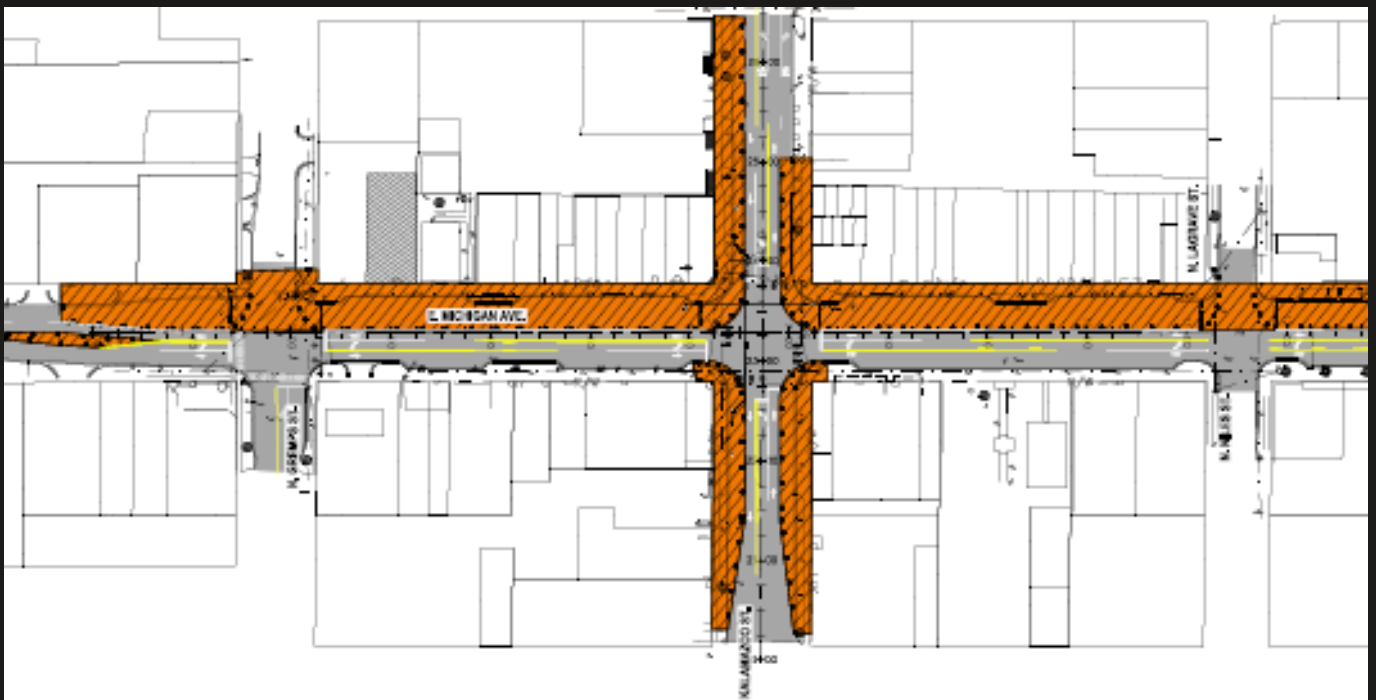


MICHIGAN AVE STREETSCAPE

PHASE FOUR

APPROX. 2 WEEKS

- Sidewalk removals and road reconstruction will occur in front of all business on north side of Michigan between Gremps and LaGrave.
- Two way traffic will continue along south side of Michigan Avenue at 25mph reduced speed
- North/south vehicle traffic along Kalamazoo will be reduced to one lane each direction, plus turn lane, between Oak and Paw Paw
- Limited sidewalk work will be conducted on Kalamazoo Street, but connectivity will be maintained throughout this phase.
- No Michigan Avenue street parking will be allowed
- Maintenance gravel will be provided at business front entrances to allow customer access at all times
- Replacement sidewalk and road surface will be in place at the end of Phase 4.

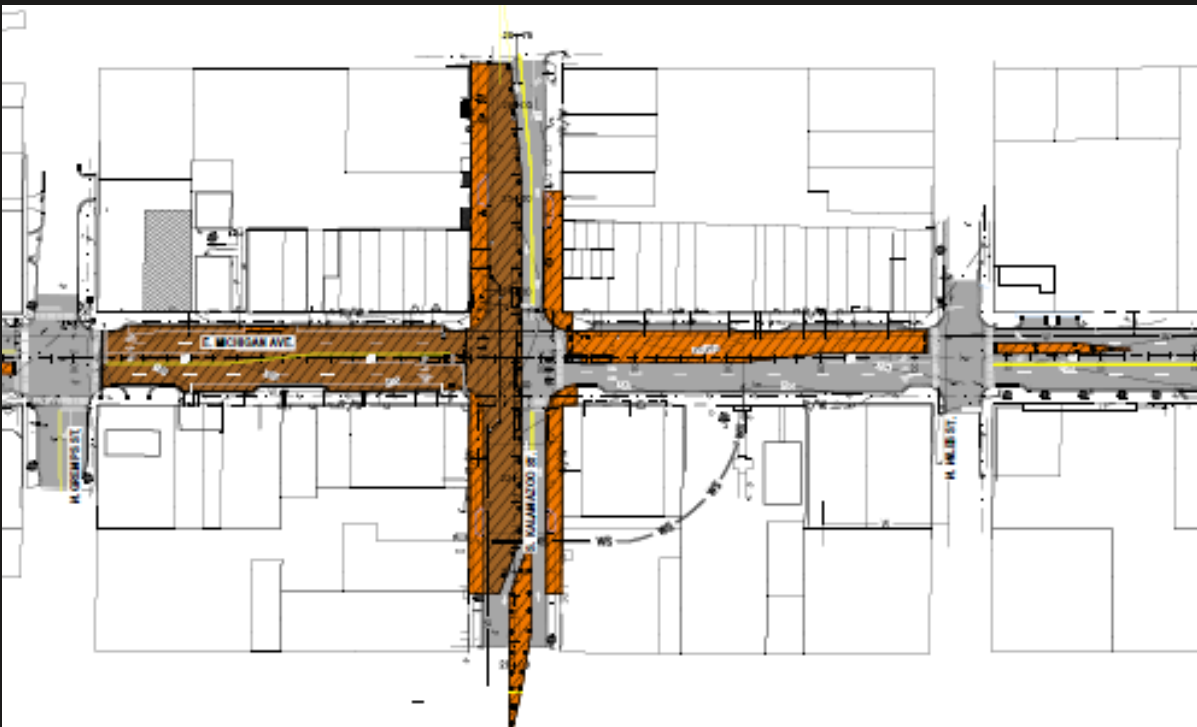


MICHIGAN AVE STREETSCAPE

PHASE FIVE - A

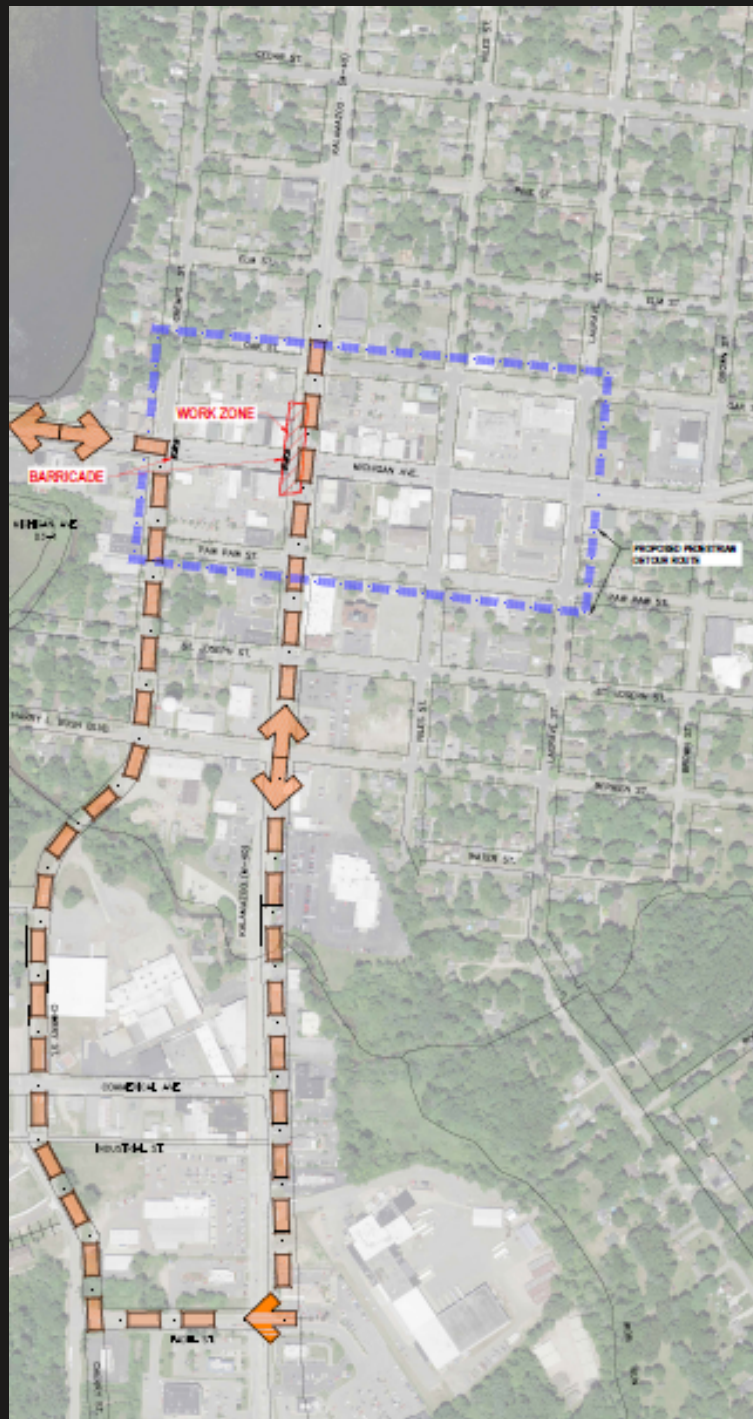
APPROX 1.5 WEEKS

- Sidewalks and road pavement along west side of Kalamazoo will be removed and replaced, until approximately the USPS parking lot entrance on the north, and the parking lot entrance behind Warner Supply on the south
- Driveway access to parking lots will remain
- Traffic flow on Kalamazoo will consist of one lane in each direction, with no westbound turns onto Michigan
- Removal of sidewalk will affect northwest and southwest corners of Kalamazoo/Michigan Ave intersection
- Michigan Avenue will be closed between Gremps and Kalamazoo and westbound traffic will detour at Niles St.
- 25mph eastbound traffic will be permitted between Kalamazoo and LaGrave
- Pedestrian access to all businesses will remain



MICHIGAN AVE STREETSCAPE

PHASE FIVE - A DETOUR ROUTE

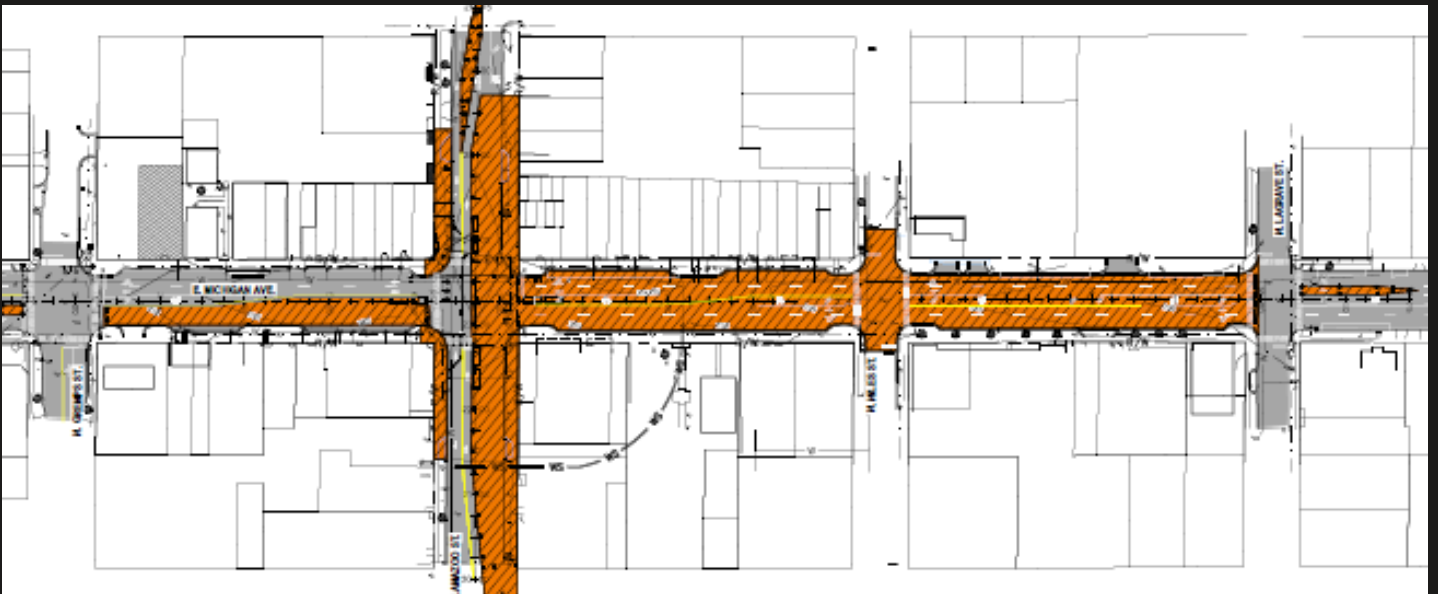


MICHIGAN AVE STREETSCAPE

PHASE FIVE - B

APPROX. 1.5 WEEKS

- Sidewalks and road pavement along east side of Kalamazoo will be removed and replaced, until approximately the first driveways to the north and south
- Driveway access to parking lots will remain
- Traffic flow on Kalamazoo will consist of one lane in each direction, with no eastbound turns onto Michigan
- Removal of sidewalk will affect northeast and southeast corners of Kalamazoo/Michigan Ave intersection
- Michigan Avenue will be closed between Kalamazoo and LaGrave.
- Eastbound traffic will detour at Gremps
- Pedestrian access to all businesses will remain



MICHIGAN AVE STREETSCAPE

PHASE FIVE - B DETOUR ROUTE





MICHIGAN AVE STREETSCAPE

FREQUENTLY ASKED QUESTIONS

What is this project about?


This project will reconstruct Michigan Avenue between Gremps Street and LaGrave Streets. This includes the sidewalk area. The road will be elevated so that the “steps” in the middle of the sidewalk area are eliminated and the sidewalk will be a continuous surface from the building front to the curb. A new water main will be constructed in a portion of the project area and the buildings will have new water service lines installed. There will also be new light poles, sidewalk, pavers, street furniture, and landscaping.

What is the tentative timeline for this project?

The project is anticipated to start Mid-May 2021 and be open to traffic by the end of August. Plantings will be completed by October 22nd.

Will downtown businesses be open during construction? How can I access them?

Yes! The majority of businesses that are located in the project area have rear entrances and customers are encouraged to use those when available. Businesses that have a Michigan Avenue entrance only will have gravel walkways and/or boards to the entrances for accessibility. Rear parking is also available in most places and the court house parking lot may be used as well.





MICHIGAN AVE STREETSCAPE

FREQUENTLY ASKED QUESTIONS

I live downtown. Will I be able to access my home?

Yes. Apartments with a Michigan Avenue entrance will have gravel walkways and/or boards to the entrances for accessibility.


What utility work is being done as a part of this project?

A portion of the water main on Michigan Avenue/Kalamazoo Street will be replaced. Water service lines from the water main to the buildings will also be replaced as a part of this project. No sanitary sewer work is being done at this time because improvements to the sewer mains were made in the project area a few years ago. Building owners may opt to have their sewer service lines replaced at their expense during this project if they wish. This is highly encouraged as it can be quite expensive to repair these lines at a later date.

Will I lose water or sewer service during construction?

If so, for how long?

Throughout this project, water service may be restricted depending on where the building is located. This will occur in the evening hours during Phase I of the project or when your water service line is being replaced. A service line replacement usually takes about 4 hours. You will be contacted in advance of the service line replacement for scheduling.





MICHIGAN AVE STREETSCAPE

FREQUENTLY ASKED QUESTIONS

How much will this project cost?


The Village was able to obtain numerous grants to assist with project funding. This project would not be possible without grant funding. Funding sources include:

Michigan Economic Development Corporation/CDBG Funds - **\$1,968,130**
Michigan Department of Transportation – Small Urban Funds - **\$374,192**
Michigan Department of Transportation – Transportation Alternative Program Funds - **\$362,284**
United States Department of Agriculture – Rural Development Business Grant - **\$89,025**
Village of Paw Paw Water Funds - **\$242,080**
Village of Paw Paw Road Funds - **\$498,083**
Village of Paw Paw Downtown Development Authority Funds – **\$64,240**

Total Project Cost – **\$3,598,034** (total cost is an estimate until bid is awarded)

What is happening to the existing downtown trees?

The existing trees are more than halfway through their expected lives and have grown under the sidewalk, making their removal for transplanting very difficult. They will be replaced by new street trees as a part of this project. Due to tree cutting requirements that are in place to protect the Indiana Long Eared Bat, our contractors will be unable to remove the trees later than March 31st. As a result, we will cut the tops of the trees off prior to this date and schedule the stumps for removal later in the project.





MICHIGAN AVE STREETSCAPE

FREQUENTLY ASKED QUESTIONS

My building is old and I am concerned about construction vibrations impacting my structure. What can be done to prevent this?


The village is looking into the feasibility of making vibration monitoring available for select structures during the project. More information will be forthcoming once the benefits of this service have been more thoroughly assessed.

Who can I contact if I have questions about this project?

Sarah Moyer-Cale, Village Manager
s.moyer-cale@pawpaw.net
269-657-3148

When will more information be available?

The bid opening for this project is the first week of April. Once a contractor has been selected and we can work with them to finalize more details, we will update this document to reflect those changes. This document will continue to be available on the Village of Paw Paw's website or by request to Village Hall or the DDA. Please remember that this document is preliminary and intended to provide what information we have at this time. All schedules are tentative.



MICHIGAN AVE STREETSCAPE



Artist's rendition for illustrative purposes only